

# Supply Chain Mapping



## THE BASICS

With minimal time and effort, you can gain valuable insight into the structure and health of the supply chains for your purchased parts and services.

supplyAware™ is a cloud-based platform for efficiently mapping manufacturing supply chains.

Its Semi-Transparent Supply™ approach delivers supply chain visibility while respecting each manufacturer's need for confidentiality, privacy, and secrecy.

supplyAware™ is simple and efficient. You update your manufacturing site's public profile, upload your list of suppliers, and we take it from there.

We validate and augment your data and manage the onboarding of your suppliers.

As we perform this same service for each of your suppliers, we effectively map your supply chain to its limits.

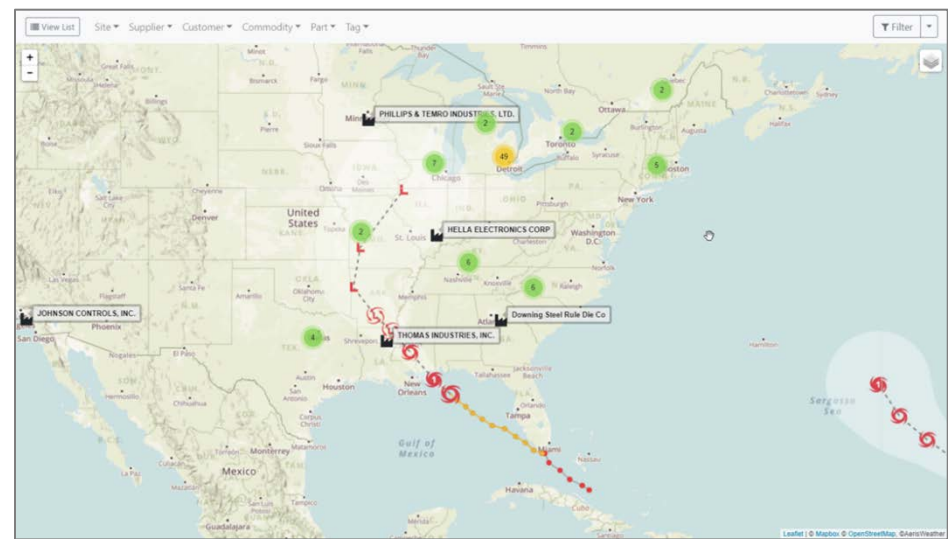
## A COMPREHENSIVE VIEW

Many companies only focus on operational and financial performance data to determine supplier risk.

While informative, this data only provides lagging indicators. After all, hindsight is 20/20.

The only way to get ahead of the curve is to measure a manufacturer's health in the context of their services.

To operate profitably, a manufacturing firm needs five things: Liquidity, Labor, Parts, Demand, and Transportation.



The sensitivity to these factors differs as a function of geographic location, parts manufactured, processes employed, and materials consumed.

## CRITICAL & CONFIDENTIAL

While your public profile is visible to the world, your relationship with your suppliers is kept private.

You gain access to augmented profiles of your suppliers and hard data on their supply chains' character but not their suppliers' names, addresses, and other sensitive details.

Semi-Transparent Supply™ yields critical risk data without sacrificing confidentiality.

This approach increases suppliers' willingness to provide data, which is crucial for any supply chain mapping project.

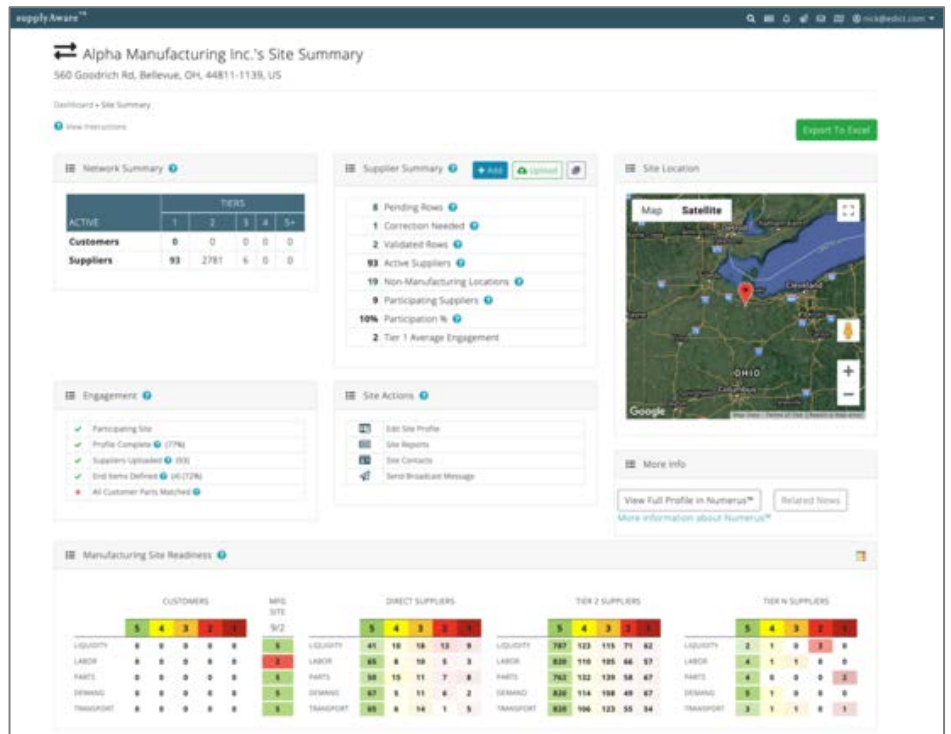
## POWERFUL MAPPING

supplyAware™ reduces the burden of monitoring your supply base. Its powerful mapping engine plots your company's direct suppliers and customers and valuable endpoint data.

- Tropical Storm Paths
- Storm Cells and Forecasts
- Flooding and Earthquakes
- Ports and Airports
- Related Manufacturing Sites
- Infrastructure Disruptions

## COUNTERMEASURE TRACKING

The only way to reduce risk from impact events is to deploy countermeasures throughout your supply chain.



supplyAware™ helps identify the areas where they are needed and helps track their implementation.

## RICH SUPPLIER PROFILES

In completing the public profile, each manufacturing site provides valuable information to its customers and suppliers. Data is timely and accurate because it is direct from the source.

- Site Locations
- Parts Manufactured
- Processes Employed
- Materials Consumed
- Unions Present
- Lean Metrics
- Shift Patterns
- Site Capacity Estimates
- Site Contacts, and much more

## SUB-TIER VISIBILITY

supplyAware™ provides critically needed visibility to the structure of the supply chains beneath your suppliers, such as Trade Routes, Supplier Counts, Border Crossings, and Choke Points.

## EFFECTIVE & EFFICIENT

The effort required of you and your suppliers is minimal. You only need to populate and upload a spreadsheet with your direct suppliers. supplyAware™ then performs essential services that are otherwise costly and burdensome:

- Address Validation
- Supplier Profile Augmentation
- Supplier Outreach & Support

## WHY YOUR COMPANY NEEDS THIS TOOL

Supply disruptions are no longer “Black Swan” events.

Over the past decade, they have been prolific.

Visibility to the entire supply chain linking raw materials, sub-components, and end items is critical to reacting swiftly in the face of disruption.

supplyAware™ gives your suppliers tools they have never had to manage their own supply chain risk making your entire supply chain more resilient.